

RESIDE

SHOWCASE

Casual ELEGANCE

A PORT ROYAL FAMILY HOME ENSURES BOTH BEAUTY AND PRACTICALITY

BY MARY THURMAN YUHAS
PHOTOGRAPHY BY VENJHAMIN REYES



INSET: BRIGHT WHITE WALLS AND CEILINGS ARE OFFSET BY POPS OF COLOR IN PILLOW FABRICS, ACCESSORIES, AND STRIKING LIGHTING.
BELOW LEFT: THE 7,300-SQUARE-FOOT PORT ROYAL ESTATE



Timing is everything in life. For Elizabeth and Sean Nolan, it was finally their year to purchase a second home. The youngest of their four children graduated from high school, Elizabeth retired from teaching middle school, and Sean—although still active on several boards—retired from his demanding position as CEO of a biotech company.

Over the years, the active pair searched Florida for an ideal site, from locations in the panhandle to Fort Lauderdale, where many of their friends live. Their quest ended when the Chicago suburbanites discovered Naples with its low-key vibe wrapped in Midwestern appeal.

"We hoped to find an existing house that had everything we wanted, but we fell in love with this lot in Port Royal," says Elizabeth. "It was on the water, and that was something Sean insisted on.

RESIDE



CLOCKWISE FROM TOP: THE KITCHEN SHOWCASES AN OVERSIZE CRISTALLO QUARTZITE WATERFALL ISLAND; THE INTERIOR STAIRCASE; THE INFORMAL DINING AREA FEATURES THOUGHTFULLY SELECTED ORGANIC ELEMENTS.



It meant tearing down the existing home. While it took longer than we wanted to wait, it was worth it."

Because Elizabeth had a vision of what the pair wanted, she researched local architects, builders, and interior designers. After compiling her findings, the pair commissioned BCB Homes, seasoned residential custom builders; Ficara Design Associates; and Stoff Cooney Architects. The 18-month-long project commenced.

"I met with the homeowners and saw the floor plans," says Molly Grup, senior interior designer at Ficara Design Associates. "The Nolans were looking for a family- and dog-friendly home where they could entertain large groups. It's always a treat to work with clients who will really use their home."

"Elizabeth wanted a lot of windows and natural light and a clean, airy look to flood the room," continues Grup. "Sean wanted a club room with a big bar and an Irish pub feel."

A calm, cool color palette dominates the 7,300-square-foot home. The flooring



is a combination of light colored wood, tile, and carpet, while bright white walls and ceilings—some detailed in shiplap and others beamed and coffered—create the relaxed yet elegant atmosphere the client desired. Hues of grays and blues found in wall and window coverings, as well as in rugs and furniture, lead the color scheme in the six bedrooms.

"My biggest inspiration stylistically was the striking, colorful art of Kristi Kohut that Elizabeth likes—as seen in the foyer and informal dining area," notes Grup. "I had to find a way to incorporate Kohut's colorful art without it feeling overwhelming. By including pillow fabrics and accessories that have pops of color, the artwork feels right at home."

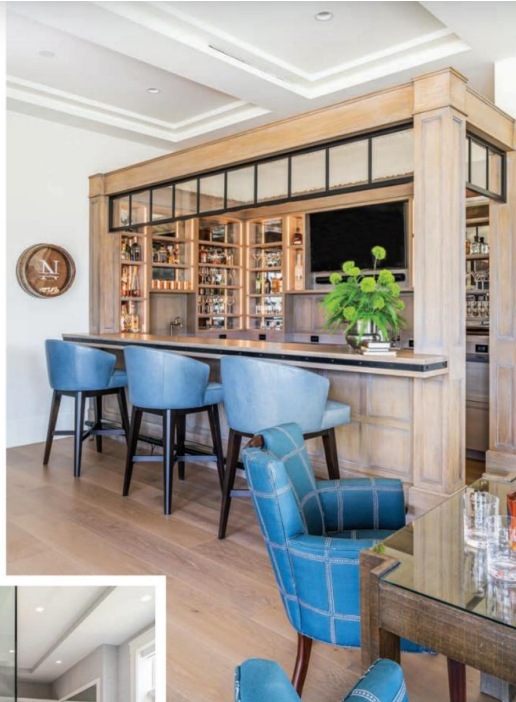
The art contrasts elegantly against the light woods and white walls. A weathered looking wooden dining table, surrounded by armless light colored upholstered chairs, sits under a chandelier of stacked interlocking circles in natural colored yarn, providing an organic element that keeps the room from becoming too stark.

Black exterior window frames on the transitional coastal residence were another influence. To continue the sophisticated flair, Grup incorporated intermittent black accents elsewhere in the home in tile and wallpaper choices.

Elizabeth recalls some friends wondering why they chose such a large home. "We want this to be our forever second home,"

the homeowner explains. "Our hope is, as our family keeps growing, it will be comfortable. We built a lounge area upstairs to make it easy and fun. It's not just for us; it's about having our family here."

Whether it's family time with Elizabeth cooking one of her Italian specialties or parties with a private chef, the kitchen was important. For softness, an oversized waterfall island of Crystallo quartzite spills over bleached walnut cabinetry. Counter stools with rattan backs and white cushioned seats add a tropical mood, while the oversized range hood in matte metal framed in polished nickel creates a practical statement piece. A backsplash composed of glossy, white



THE RESIDENCE'S DESIGN COMBINES A CALM, COOL COLOR PALETTE WITH A CLEAN, AIRY LOOK CREATED BY LOTS OF WINDOWS AND NATURAL LIGHT.



RESIDE



textured subway tiles looks handcrafted, keeping the overall tone and tenor of the room casual, cool, and ever so slightly imperfect.

"We added transom windows inside the upper portion of the kitchen wall cabinets and above some of the interior doors so light comes through," adds Grup, noting there is a bright, jaunty appeal throughout the home.



THE OUTDOOR WATERFRONT LIVING SPACE BOASTS SEATING AREAS ADJACENT TO THE POOL AND THE FIREPIT, A GRASSY AREA FOR LAWN GAMES, PLUS ACCESS TO THE BOAT DOCK.

Sean is the bartender in the club room where he specializes in martinis. Parties often start in the friendly space and continue to the informal dining areas both inside and out. Often, guests gather at the boat dock and journey by water to one of Naples' many restaurants.

At night, Elizabeth and Sean like to sit in the generously sized outdoor living space to enjoy Southwest Florida's glorious sunsets. Equipped with both a conventional grill and an Evo flattop grill, the outdoor cooking area rivals the interior kitchen. "It's a great covered place for entertaining," says Grup. "There are several seating areas—by the pool, by the firepit, and there is a grassy area for lawn games."

The building team and the homeowners are delighted with their collaboration and the home speaks for itself. "Elizabeth continues to buy accessories and art to make it their own, and they are looking forward to enjoying the home for many years," adds Grup. ◀



A CONTEMPORARY ART GALLERY



239.778.4665 | catherine@thingsilikebyc.com
3954 bayshore drive, naples, florida 34112

www.thingsilikebyc.com

f things i like by c @things_i_like_by_catherine